



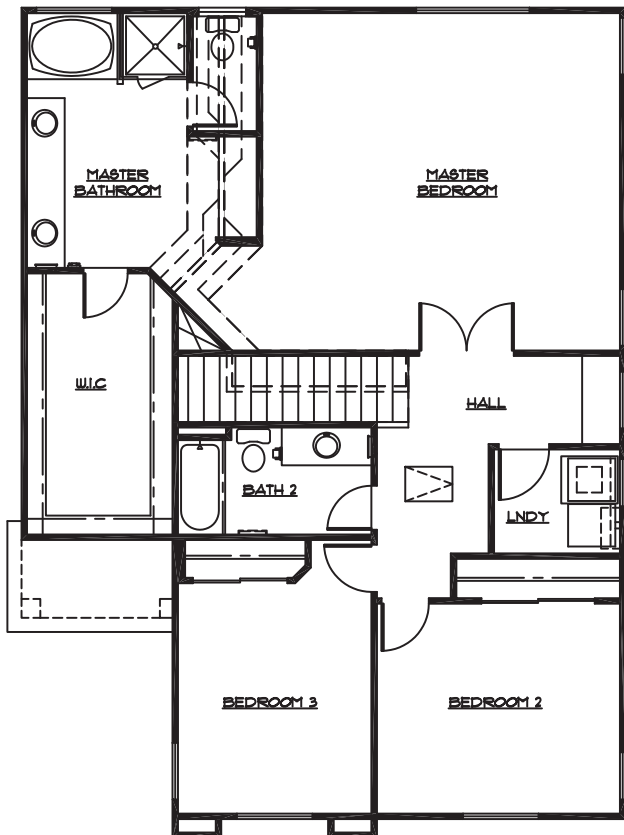
# PALMS BAY



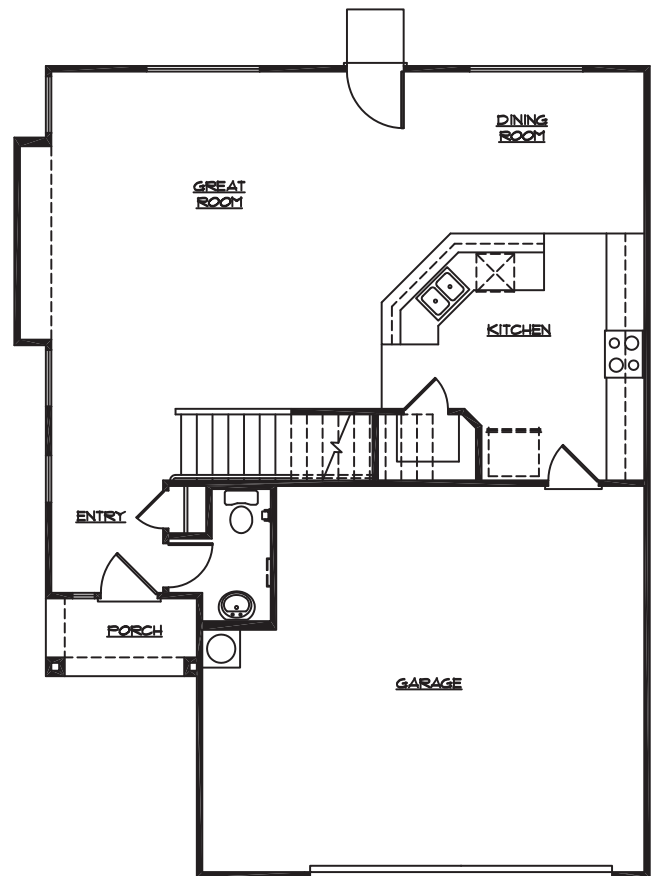
## Plan 2033

- 3 Bedrooms
- 2 1/2 Bathrooms
- 2 Car Garage
- 2,033 Square Feet

Second Floor



First Floor



**RHODES**  
HOMES



In a continuous effort by Rhodes Homes to improve the quality of your home, we reserve the right to change promotional offers, features, prices, plans and specifications without notice. Significant changes may be made during or after the construction of the model homes. Rhodes Homes reserves the right to modify, relocate or eliminate any or all of the features, specifications, plan utilities, design or shape thereof, all without notice or obligation to any purchaser. Price range reflects base price only and lot premiums may apply. Other fees may also apply. All square footages are approximate square footages of the total livable space. Please see your onsite sales associate for complete details. Additional restrictions and fees may apply.

